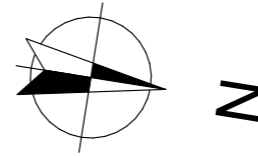


LES BORÉALES

DE SAINT-PRYVÉ

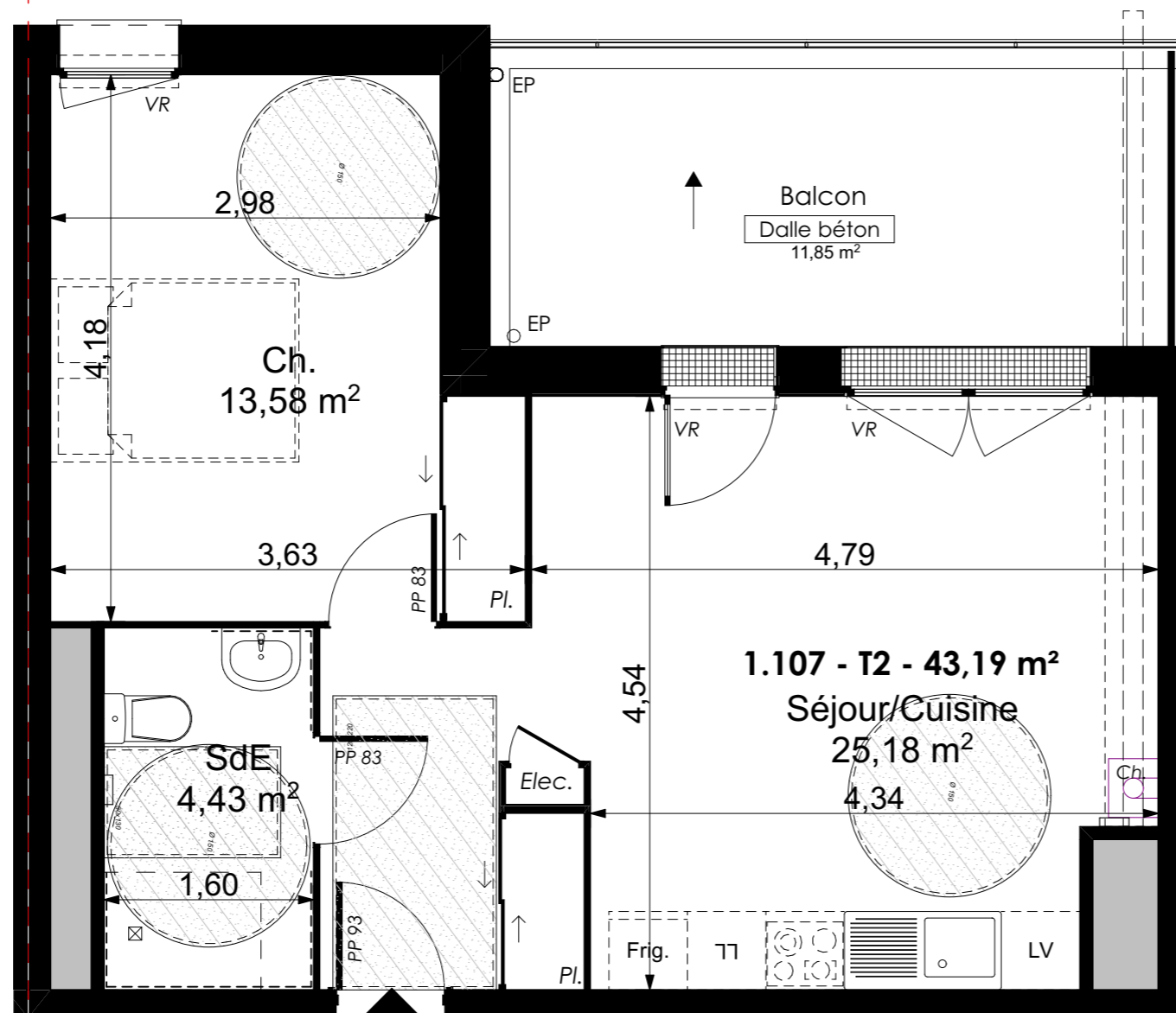


Valloire Habitat

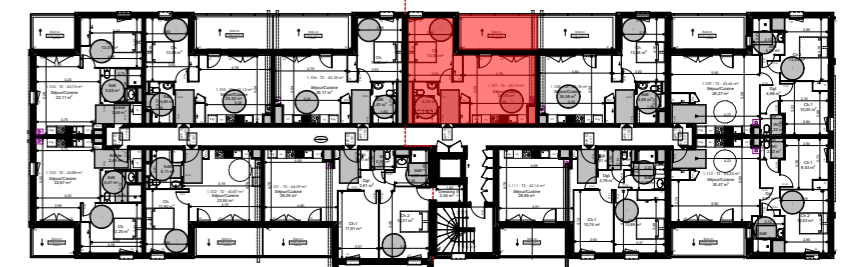
Groupe ActionLogement

28 bis rue du Gros Raisin
45750 SAINT-PRYVE-SAINT-MESMIN

Les BoRéales de Saint-Pryvé



TYPE T2 - LOGEMENT 1-107 R+1		
Séjour/Cuisine		25,18 m ²
SdB		4,43 m ²
Ch. 1		13,58 m ²
Total surfaces habitables		43,19 m ²
Annexes		Surf. Utile
Balcon		11,85 m²
Total surfaces Annexes		11,85 m ²
	TOTAL SURFACES	55,04 m ²



15/11/2022 Indice C

Ech : 1:50

0.00 0.50 1.00 2.00 3.00